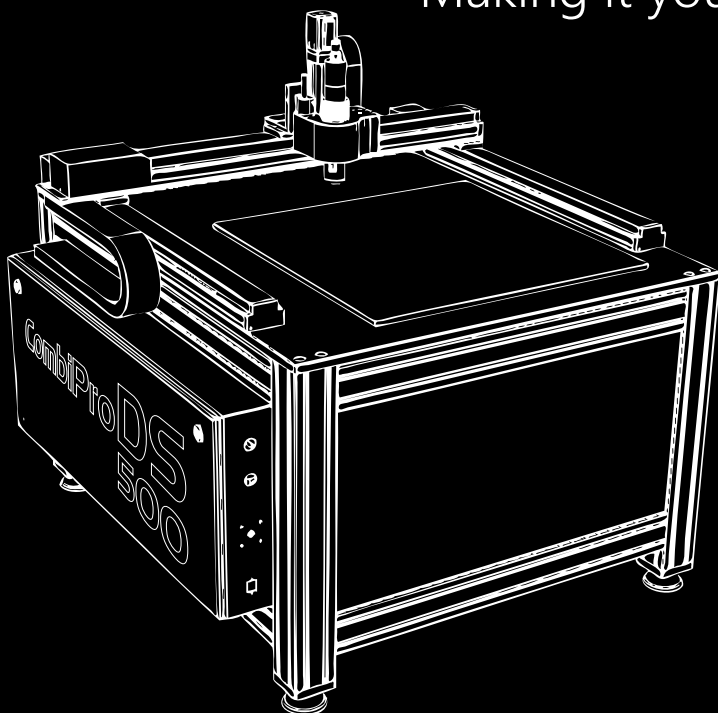




This is "the" dedicated die ejection rubber cutter in the market.

The all new CombiPro DS500 systems integrates smoothly into your workflow. A user friendly, maintenance free and economic solution for your day-to-day business.

Making it your first choice for rubber cutting.



Small footprint, practical working area (550 x 550 mm), integrated vacuum bed and a powerful (air pressured) oscillating tool makes the DS 500 the perfect dedicated rubber cutter for every die shop.

Ergonomically designed, uninhibited access from all sides

Drive system; the CombiPro DS500 features an exceptional strong, quiet, and maintenance-free closed loop ball screw system for all axis (X, Y, C and Z).

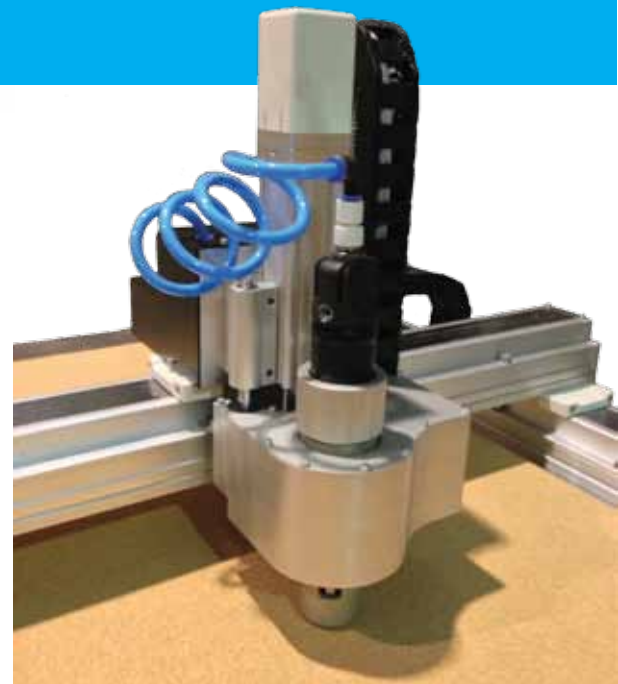


Material hold-down; secure material hold-down is key to efficient cutting. An integrated vacuum tabletop and pump allows for processing without the issues of material shifting.

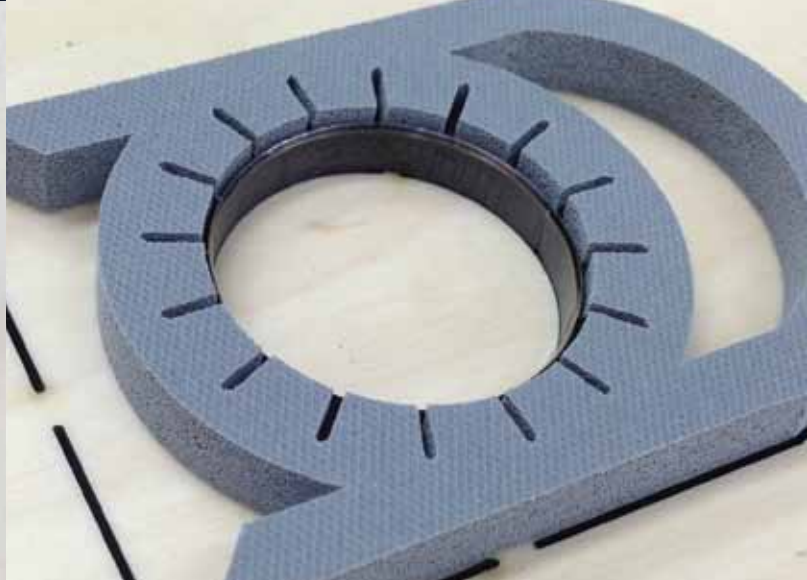
toolhead and tooling

A powerful (air pressured) oscillating tool with a 7 mm stroke at 166 Hz ensures that rubber can be cut at impressive speeds.

High-speed Z-axis with proven tooling using optimal blade geometry to optimize speed, resulting in improved performance delivering exceptional productivity.



Cut on the CombiPro DS500



The PackCombiPro production front-end allows you to import a wide range of supported industry file formats; PDF, EPS, CF2, DXF, DWG, DDE(S) and others. It also includes a material database for output, saving time in selecting the correct speeds, depths and others settings for a specific material.

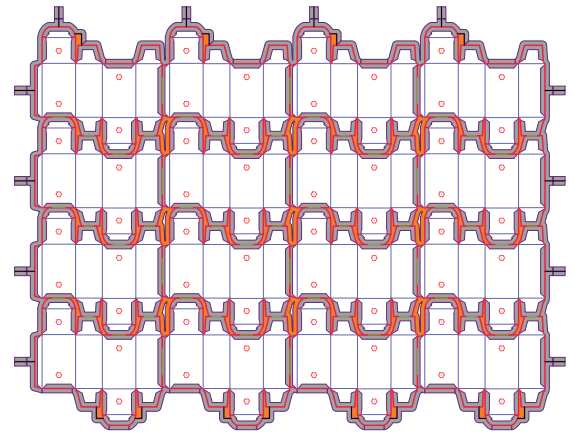
The PackRubber module connects seamlessly to the DS 500.

Enhanced functionality has been developed to get the most out of the dedicated rubber cutter using blades. Rubber calculation and optimization using smart functionality.

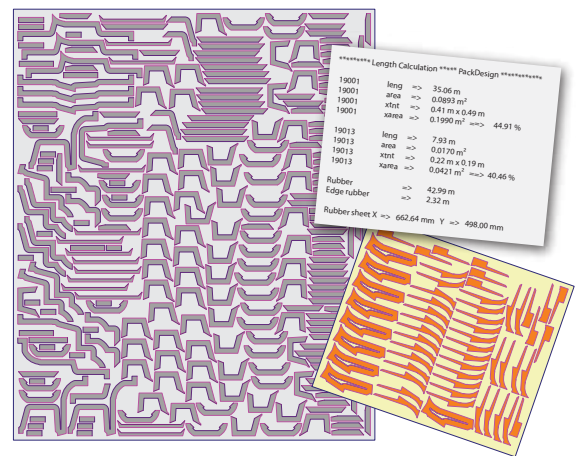
- Management system for rubber profiles of customers.
- Rubber type assignment.
- Recognition of rubber parts by color
- Powerful functions for cutting and joining rubber parts
- Parameters setting for standard/CUIR/sandwich/rotary dies

Automatic nesting of rubber parts has never been this easy.

- Set dimensions for sheet size
- Set distance between rubber parts
- Automatic splitting of different rubber types
- Multiple sheets of same rubber type
- Control degree of optimization



↓ Quick nesting, optimize in seconds!



controller

The PC controller is completely tailored to your needs. Redesigned to fit the DS.

The streamlined User Control Center guarantees an optimal workflow - from original file to finished product.

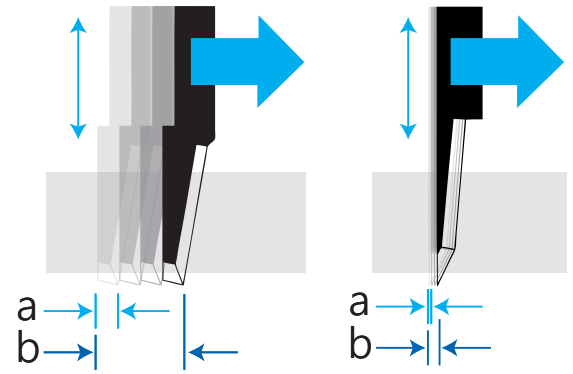
This manifests itself in unsurpassed productivity and superior quality.



UCC - User Control Center

cutting with a blade

Optimized for speed and performance, using the right blade we can "catch" (a) more material in every oscillating move. Therefore speed and distance (b) are improved, getting the most out of the cutting performance. To cut more intricate shapes we recommend using the tipped blade.

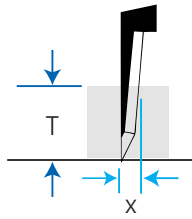


blades

A broad selection of blades is available to fit every job.

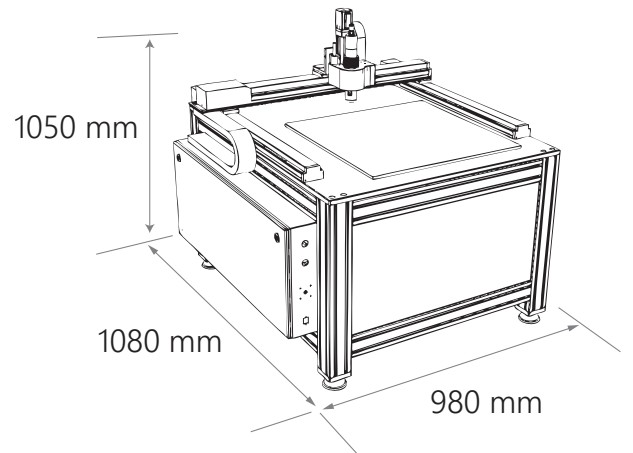


Note: Overcut (X) depends entirely on material thickness (T)



technical specifications

Working area:	550 x 550 mm
Working height:	+/- 700 mm
Overall dimensions:	980 x 1080 x 1050 mm
Material height:	up to 40 mm, depending on tooling (blade)
Gross Weight:	+/- 180 kg
Controller:	PC (not included) controller, ethernet (RJ45)
Oscillating stroke:	7 mm at 10,000 strokes/min (166hz)
Axis:	X, Y, C and Z (closed loop, ball screw)
Axis speed:	up to 30 m/min
Axis Acceleration:	up to 3 m/sec ²
Axis Repeatability:	+/- 0.02 mm
Electrical:	230 v 50-60 Hz, 16A (includes vacuum pump)
Vacuum pump:	1.5 HP (1.1 kW)
Air Pressure:	80 L/min 6 bar (compressor not included)
Environment:	operating temperature +5°.. +40°C relative humidity 40% to 80% non condensing



Compact design, space-saving footprint.

Certification/security: CE, emergency stop

Recommended PC requirements: Windows XP Professional with Service Pack 3 (32 bit), Windows 7 Professional (32 bit), 2 GB RAM or more recommended, 1 GB of available hard-disk space, 2 free Ethernet RJ45 ports, 2 free USB ports



St Janstraat 30
4741 AR Hoesen
The Netherlands
Tel: +31 165 505681
Fax +31 165 504923
www.bcsi-systems.com
info@bcsi-systems.com